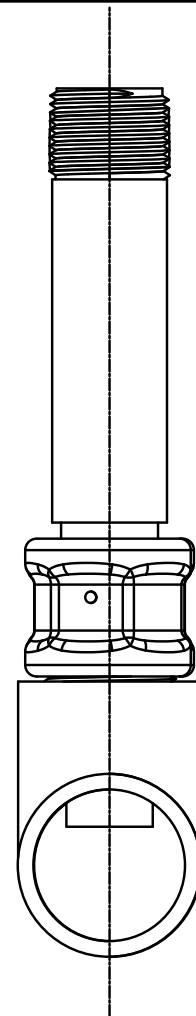


TWIST LOCK BAYONET  
QUICK DISCONNECT INLINE  
INSTALLATION ASSEMBLY

RECEPTACLE INTERFACED  
WITH 1" FNPT PIPE TEE

CROSS-SECTION TO LEFT

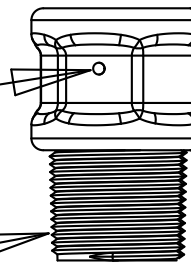
SIDE VIEW TO RIGHT



TWIST LOCK RECEPTACLE  
SELECTED FEATURES

LOCKING  
PINS

1" MNPT



1" MNPT

"O"-RINGS

TWIST LOCK SENSOR  
SELECTED FEATURES

**NOTES**

1. Twist lock receptacles used with pH sensors must be installed such that the sensing tip will be angled at least 15 degrees below the horizontal up to max 90 degrees (tip straight down as shown above).
2. Receptacles for use with ORP sensors may be installed in any angle or position without restriction.
3. Receptacle Material of construction is either KYNAR (Item # 14003, 1"MNPT-TWISTLOCK-KYNAR-SS) for use up to 50 psig or PEEK (Item # 14024, 1"MNPT-TWISTLOCK-PEEK-HASTC) for use up to 100 psig
4. Twist Lock Sensor body material of construction is RADEL (8X31), PEEK (8X41) or RYTON (8X51, 8X52)
5. O-ring material of construction is Viton-75 standard; CV75, Simriz 485 & Kalrez 4079 Optional
6. The max insertion depth past 1"MNPT threads on twist lock receptacle is 0.8" to 1.0" inches for twist lock sensor in the default no tines configuration, depending upon exact model used.
7. Max insertion depth for twist lock sensors with optional protective tines is 0.7" inches for all models.
8. 1" MNPT Twist Lock receptacle should be used with ASTI Twist Lock Sensors for inline installations.
9. Do not use any sensor beyond the factory defined maximum temperature or pressure rating.

TOLERANCES	
1 Place: ± .1	3 Places: ± .005
2 Places: ± .01	4 Places: ± .0005
Angular: ± 0.25°	

DRAWN BY  
RH

CHECKED BY  
TADP

APPROVED BY  
MJP



Advanced Sensor Technologies U.S.A.  
Website: <http://www.astisensor.com>

TITLE  
1" MNPT Twist Lock Quick Disconnect Assy

SIZE	PROJECT	DRAWING NO.	REV
B	TWIST-LOCK	Twist Lock Inline Assy	/
SCALE	Not to Scale	MODEL	Twist Lock Assembly
SHEET	1	OF	1